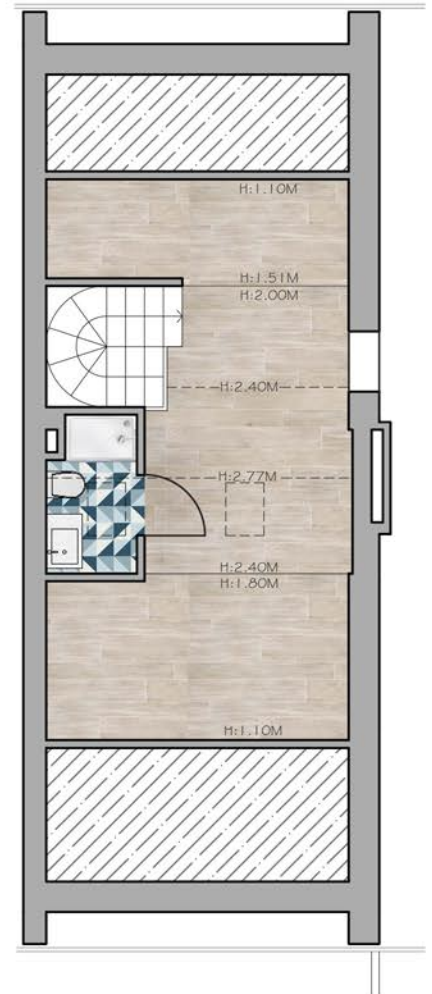


# COMUNE DI FIESOLE - LOCALITÀ CALDINE

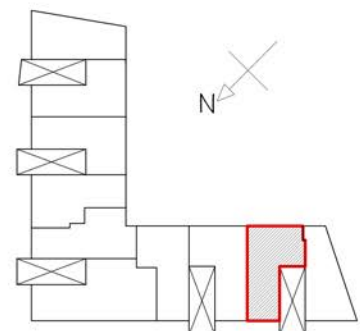
## APPARTAMENTO 29



PIANO SECONDO H. 2.70m  
Superficie: 63.00 Mq  
Terrazze: 14.00 Mq



PIANO SOTTOTETTO  
Superficie: 30.00 Mq



VIA FAENTINA